

Fr Joseph Canali COLUMBARIUM

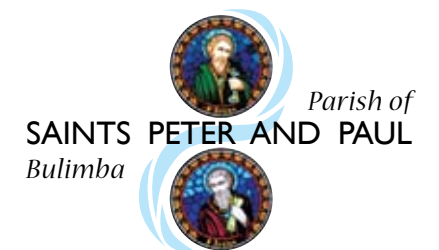
*In a beautiful crypt at
the Church of Sts Peter and Paul,
a columbarium has been established
to receive the ashes of
parishioners who have been cremated.*



For further information
please contact the
Parish of Sts Peter and Paul
25 Main Avenue
Bulimba
Queensland 4171

Telephone 07 3399 2386
Facsimile 07 3399 4038

Email bulimba@bne.catholic.net.au
www.bulimbacatholic.com



Fr Joseph Canali Columbarium

When we come to church for Mass, we join the whole Communion of Saints in offering God our praise and thanks. Our worship includes all those who have gone before us into eternal life.

You can have a permanent place in the parish community and its liturgy by having your ashes interred in the sacred space of the columbarium. The names of those who have been buried may also be recorded at the heart of the praying community by placing a memorial plaque on the columbarium wall.

The Funeral Liturgy

The funeral liturgy takes place in the parish church, usually in the context of the Mass. In this liturgy we bid farewell to the person we love and commend them to God's mercy. The person's body is then taken for burial or cremation. There may be a rite of committal at the crematorium just as there is at the graveside. When the ashes are returned to the family, they may be placed in the final resting place in the crematorium with a brief rite. It is usually celebrated with just a few family members and friends.

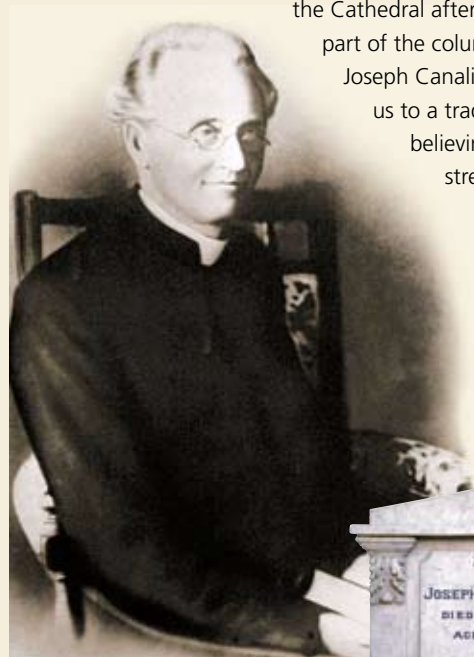
Catholics and cremation

Cremation has been allowed for Catholics since 1963. Originally cremation was banned because it was a symbol of an aggressive denial of Christian belief in the resurrection and life after death. This is no longer so. In the funeral liturgy, the body of the deceased person is honoured with incense and treated with the respect due to a human being. A person's cremated remains are treated with the same respect and given a place of honour in the columbarium.

Who is Joseph Canali?

Joseph Augustine Canali (born 15 December 1841, died 15 August 1915) was an architect/engineer brought from Italy by Brisbane's first bishop James Quinn to finish the building of The Cathedral of St Stephen.

He was ordained priest on 5 January 1879 and for 37 years was renowned for his holiness and pastoral care of the sick and disadvantaged. Between 1904 and 1915 Joseph Canali crossed the river by ferry each week for the community at Bulimba. When a new church was opened at Bulimba in 1926 to replace the original 1896 timber church, it was dedicated as a memorial to Canali. The memorial stone erected in the Cathedral after his death is now part of the columbarium crypt.



Joseph Canali's memorial links us to a tradition of faithful believing in this area stretching back over a century, a tradition which includes the family names of those who are commemorated on the walls of the columbarium.



Obtaining a niche

A niche in the columbarium may be obtained by the next of kin when a person associated with the parish dies, or may be reserved in advance.

At this time you will be asked to sign a contract and pay for the niche. The cost of \$875 (\$962.50 with GST) includes the cost of engraving the plaque.

Likewise, a memorial plaque may be erected at the time of a relative's death, or may be reserved in advance. At this time you will be asked to sign a contract and pay for the memorial. The cost of \$425 (\$467.50 with GST) includes the cost of engraving the plaque.

Further information and a copy of the contract is available at the parish office.

The memorial plaque

The plaque for engraving is a 12cm square brass plate. Templates for the lettering and sample wording are available from the parish office.

Access and upkeep

Those who have purchased a niche or memorial plaque will have 24 hour access to the columbarium crypt. The parish will honour its deceased members by keeping the crypt in a clean and dignified state.

Please refer to the back of this brochure for parish contact details.

Left: Joseph Augustine Canali and memorial stone from The Cathedral of St Stephen.